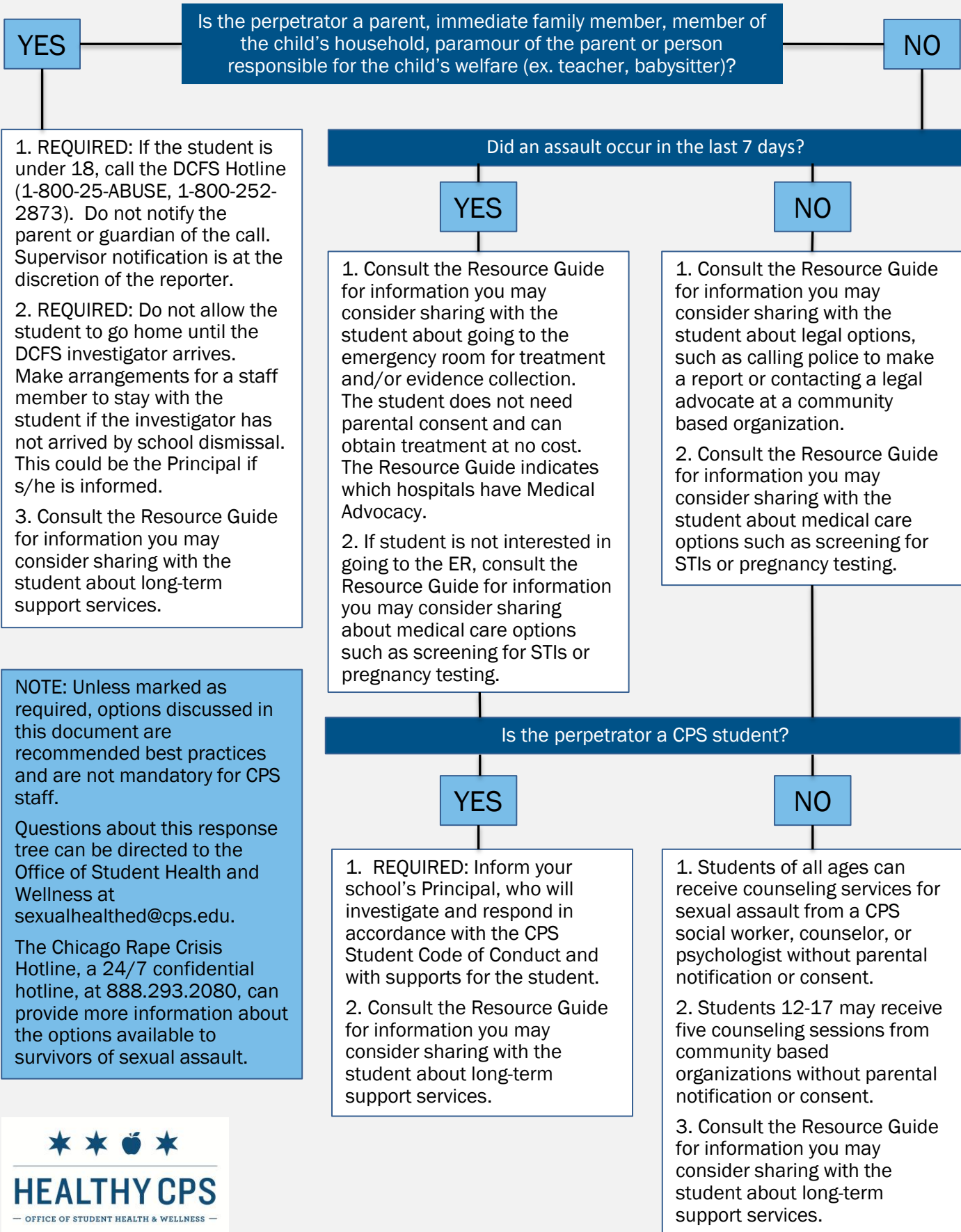


Recommended Sexual Violence Response Tree



NOTE: Unless marked as required, options discussed in this document are recommended best practices and are not mandatory for CPS staff.

Questions about this response tree can be directed to the Office of Student Health and Wellness at sexualhealth@cps.edu.

The Chicago Rape Crisis Hotline, a 24/7 confidential hotline, at 888.293.2080, can provide more information about the options available to survivors of sexual assault.



HEALTHY CPS

— OFFICE OF STUDENT HEALTH & WELLNESS —